



www.bluelake.com

Bluelake Document Print Utility for Kofax Overview

The Bluelake Document Print utility for Kofax provides a point and click interface embedded within the Kofax Capture Scan, Quality Control module, or Validation Modules. Right-click menu options from within these modules allow for the printing of an entire document, selected pages within a document, or a single page.

System Requirements/Compatibility:

- Kofax Version 5.51 through 10.x

Download and Installation:

A demo download of the application is available at our website at <http://www.bluelake.com/Products> under the Kofax-Related Apps and Utilities section.

After download, double-click on the exe file to invoke the install. Make sure the Kofax Ascent Capture Quality Control module is closed before running the install.

The demo download provides a 15 day fully functional version of the product, which can be converted to a permanent copy by purchasing a license.

Pricing:

Qty 1	Qty 3	Qty 5	Qty 10	> 10
\$200	\$450	\$625	\$1000	\$100 each

For more information or to purchase licenses, please contact:

Bluelake Software, Inc.

www.bluelake.com

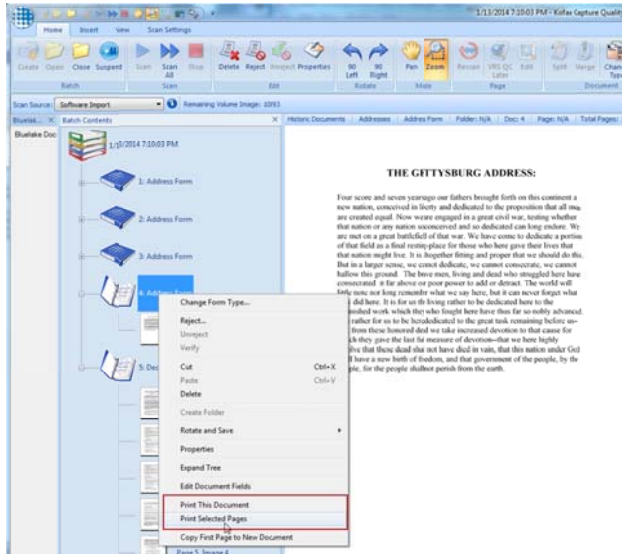
Phone: (888) 374-2220 x201

Email: info@bluelake.com

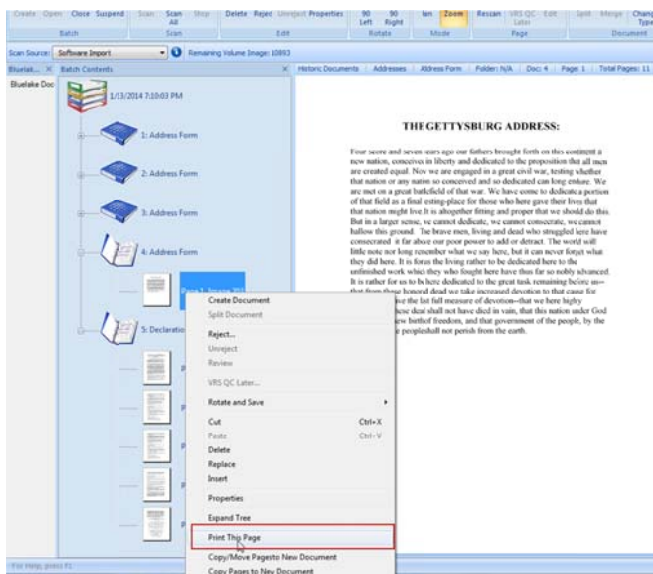
Bluelake Document Print Utility for Kofax User Instructions

After installation, when opening the Kofax Capture Scan, Quality Control, or Validation Modules, new menu options will be visible when right clicking on a document, or on a page within a document.

For instance, when selecting a Document entry, **“Print This Document”**, and **“Print Selected Pages”** will be available among the other right-click menu options.

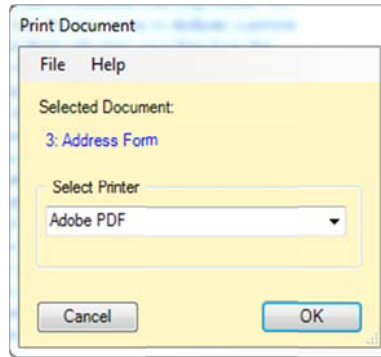


Alternately, when a single page entry is selected a **“Print this Page”** option will be available. These functions are discussed below.



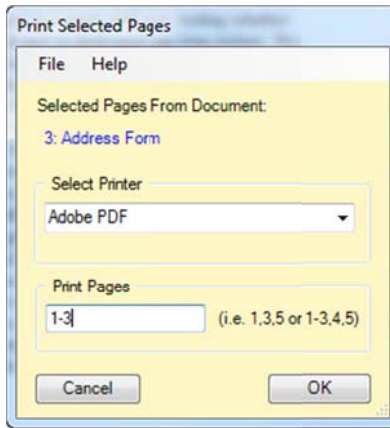
Print This Document

Presents a printer selection dialog, and prints all pages in the currently selected document.



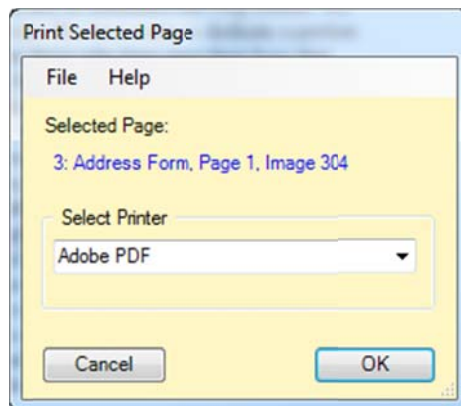
Print Selected Pages

Presents a printer and page range selection dialog. Page ranges can be expressed using hyphens – for instance “1-3” – or individual pages can be expressed using commas – for instance “1,3,5”.



Print This Page

Presents a printer selection box and prints the currently selected page within a document. Available only when a single page within a document is selected.



Product Licensing Instructions

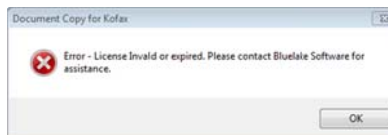
When first installed, a temporary 14 day, 100 use license will be created for Document Copy. The license can be extended or converted to a permanent license with a license key. To extend the temporary license or to purchase a permanent license code, please contact Bluelake Software.

Activating a license key:

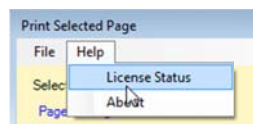
To activate a license key, open a Batch in Batch Manager in one of the applicable Kofax modules – Scan, Quality Control, etc., and click to invoke one of the options:



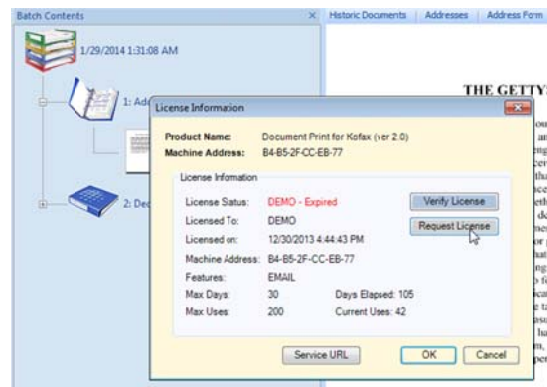
You might see the following message if the license has expired. Click OK to continue:



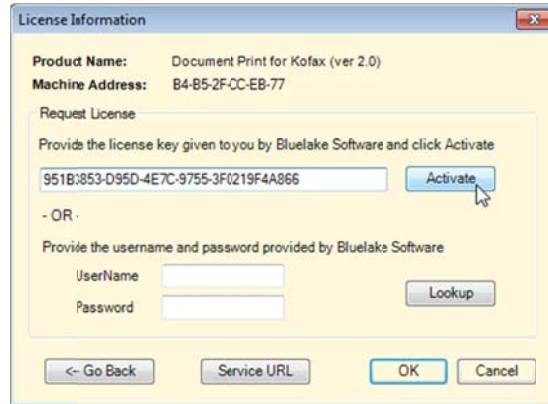
Otherwise, from the resulting application window select *Help, License Status*.



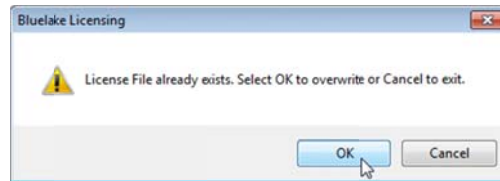
On the License Information window click the **Request License** button



On the resulting License Activation window copy and paste the license key into the Activation box and click the Activate button:



Select OK to overwrite the existing (expired or temp) license:



The License Creation Successful message should be displayed – click OK to close:



Click OK to close the license window:

